



AREA SUMMARY	
	HOTEL
BASEMENT	6,186 SF
1 FLOOR	17,490 SF
2 FLOOR	15,476 SF
3 FLOOR	7,713 SF
TOTAL	46,865 SF
MAX ALLOWED	47,025 SF

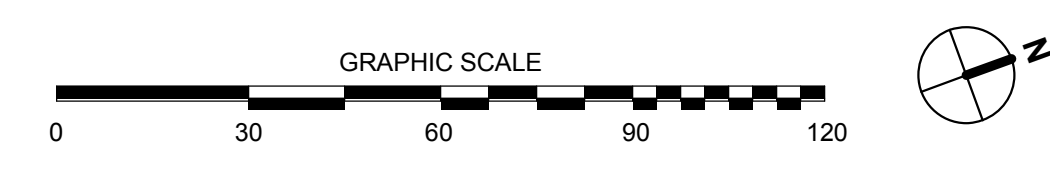
MAXIMUM BUILD-OUT UNDER BPO W/HILLSIDE FAR REDUCTION: 117,564 X 0.4 = 47,025 SF

PARKING REQUIREMENT
 TOTAL ROOM COUNTS: 87 ROOMS
 1 CAR/ROOM: 87 CARS REQUIRED.
 TOTAL: 87 CARS PROVIDED (21 compact 24%)

SUMMARY

SITE PLAN

1
1" = 30'-0"



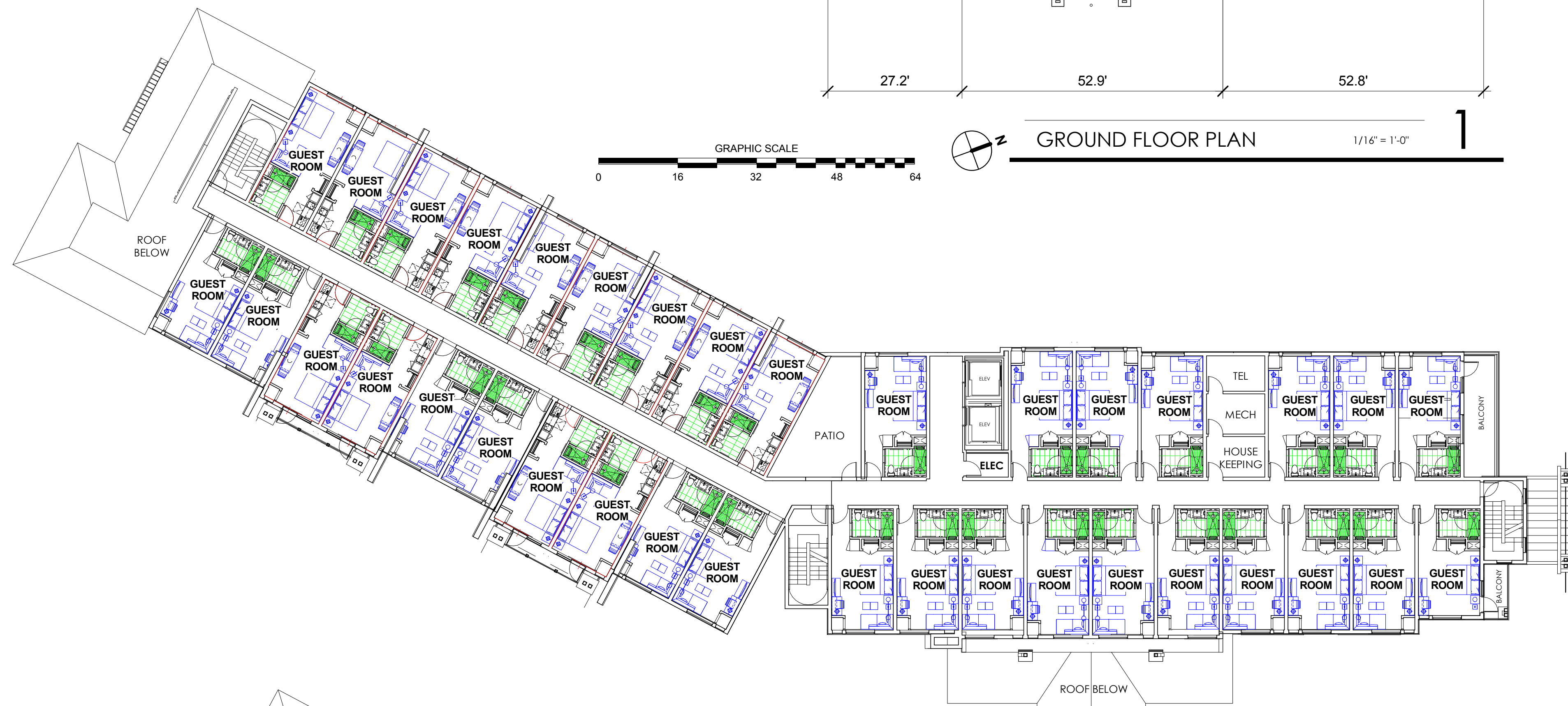
06/03/17



2277 Fair Oaks Boulevard, Studio 220
 Sacramento, California 95825
 916 993-4800 | www.hrgarchitects.com

SITE PLAN
7701 REDWOOD BLVD - NOVATO HOTEL CONCEPT STUDY

A1



SUITE COUNT - all floors			
Type Mark	Family	Count	Level
KD	KD SUITE	8	BASEMENT
KS-2	KS-2 SUITE	4	BASEMENT
		12	
KD	KD SUITE	8	LEVEL 1
KS-2	KS-2 SUITE	14	LEVEL 1
		22	
KD	KD SUITE	19	LEVEL 2
KDL	KDL SUITE	4	LEVEL 2
KS-2	KS-2 SUITE	13	LEVEL 2
		36	
KD	KD SUITE	13	LEVEL 3
KDL	KDL SUITE	4	LEVEL 3
		17	
		87	

TOTAL ROOM COUNT: 87 ROOMS

06/03/17



2277 Fair Oaks Boulevard, Studio 220
Sacramento, California 95825
916 993-4800 | www.hrgarchitects.com

FLOOR PLANS

7701 REDWOOD BLVD - NOVATO HOTEL CONCEPT STUDY

A2



**EAST
ELEVATION**



WEST ELEVATION

06/16/17



2277 Fair Oaks Boulevard, Studio 220
Sacramento, California 95825
916 993-4800 | www.hrgarchitects.com

ELEVATIONS
7701 REDWOOD BLVD - NOVATO HOTEL CONCEPT STUDY

A3



NORTH ELEVATION



SOUTH ELEVATION

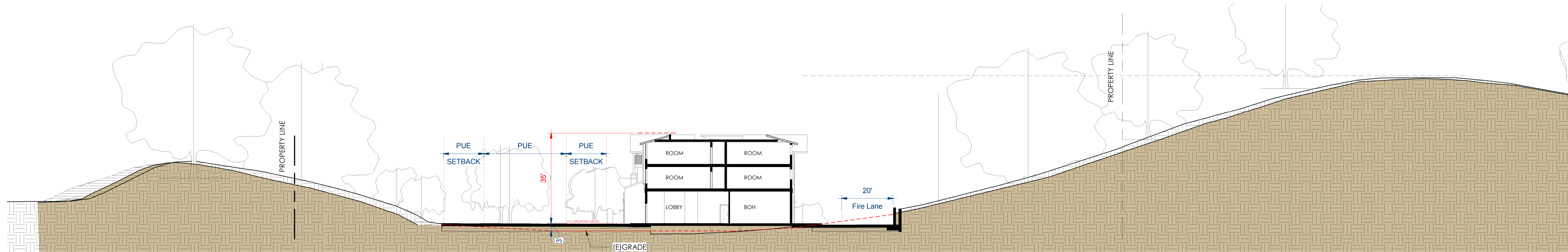
06/16/17



2277 Fair Oaks Boulevard, Studio 220
Sacramento, California 95825
916 993-4800 | www.hrgarchitects.com

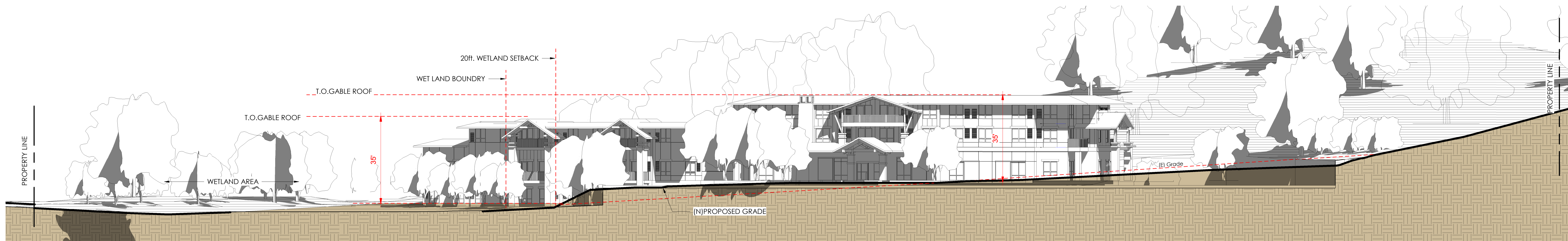
ELEVATIONS
7701 REDWOOD BLVD - NOVATO HOTEL CONCEPT STUDY

A4



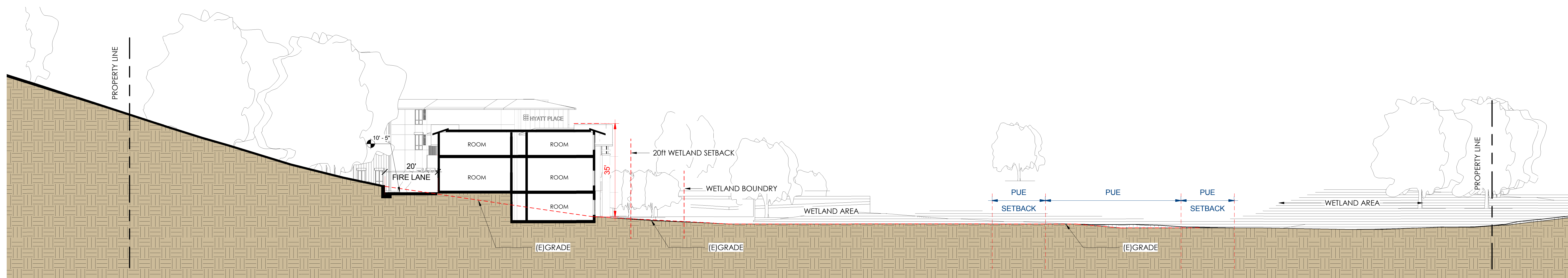
BUILDING SECTION-1

1



SITE SECTION - THRU ENTRY PLAZA

2



SITE SECTION - THRU WETLAND

3

06/16/17

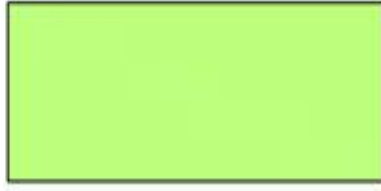

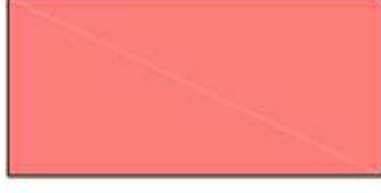


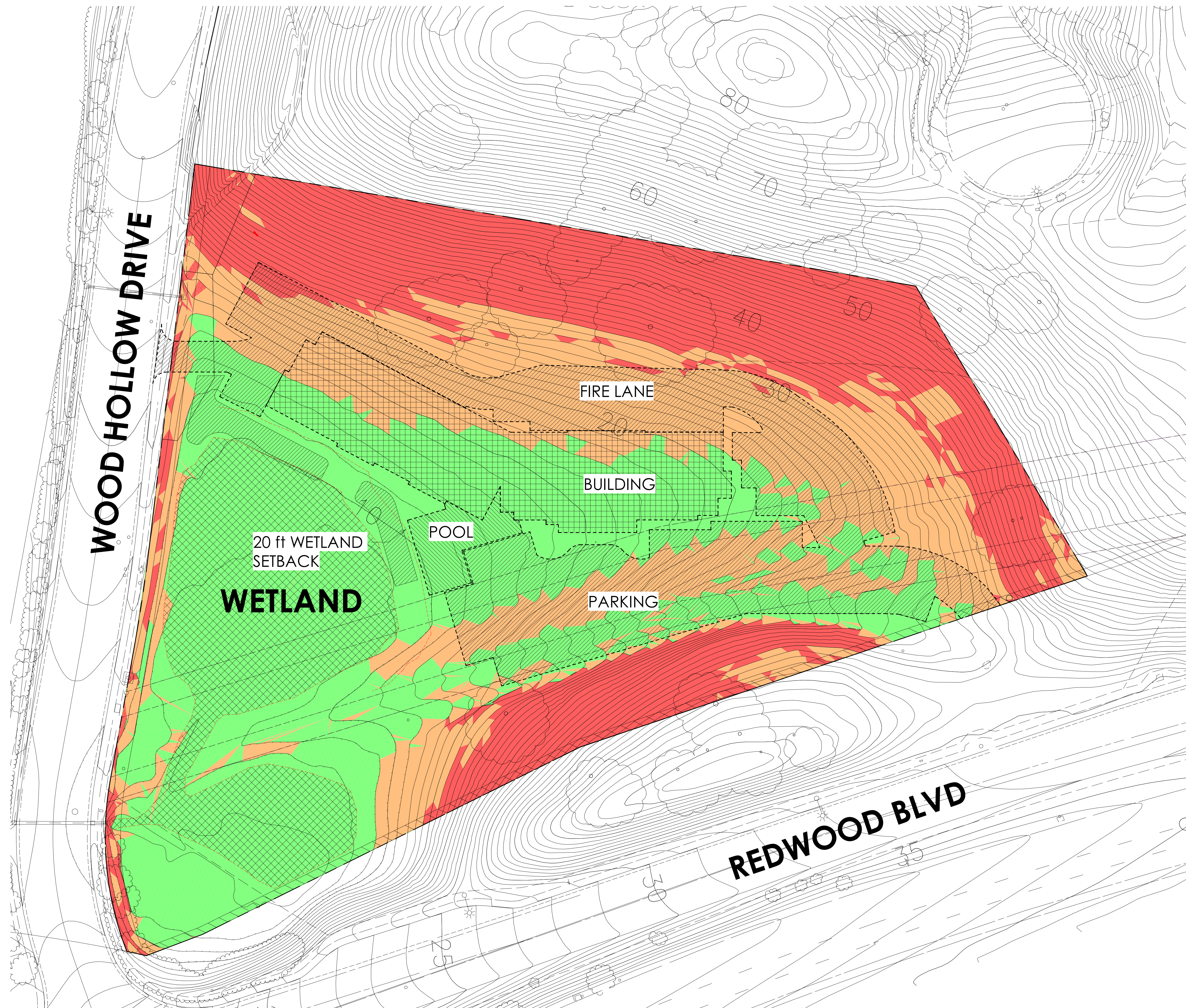
2277 Fair Oaks Boulevard, Studio 220
Sacramento, California 95825
916 993-4800 | www.hrgarchitects.com

SITE SECTIONS
7701 REDWOOD BLVD - NOVATO HOTEL CONCEPT STUDY

A5

SLOPE ANALYSIS LEGEND - AREA C

COLOR	SLOPE	AREA	PERCENT
	0 - 10%	1.94 AC.	43.3%
	10 - 20%	0.97 AC.	21.7%
	> 20%	1.57 AC.	35.0%
	TOTAL	4.48 AC.	100%



SITE PLAN_SLOPE ANALYSIS

1" = 30'-0"

1

06/03/17



2277 Fair Oaks Boulevard, Studio 220
 Sacramento, California 95825
 916 993-4800 | www.hrgarchitects.com

SITE SLOPE ANALYSIS

7701 REDWOOD BLVD - NOVATO HOTEL CONCEPT STUDY

A6



06/03/17

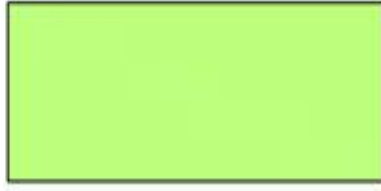

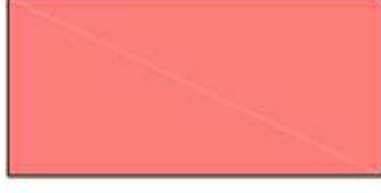


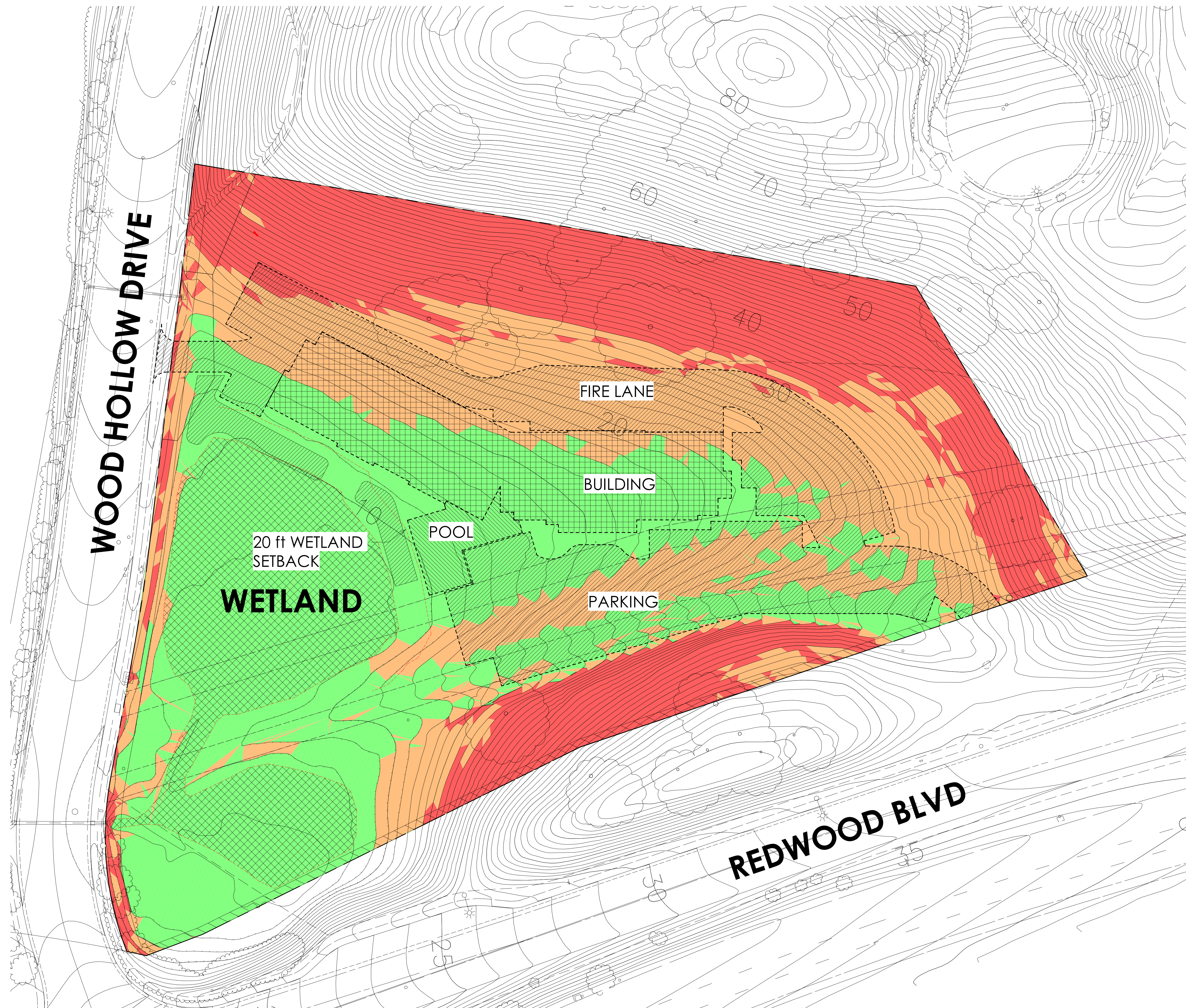
2277 Fair Oaks Boulevard, Studio 220
Sacramento, California 95825
916 993-4800 | www.hrgarchitects.com

PERSPECTIVE
7701 REDWOOD BLVD - NOVATO HOTEL CONCEPT STUDY

A7

SLOPE ANALYSIS LEGEND - AREA C

COLOR	SLOPE	AREA	PERCENT
	0 - 10%	1.94 AC.	43.3%
	10 - 20%	0.97 AC.	21.7%
	> 20%	1.57 AC.	35.0%
	TOTAL	4.48 AC.	100%



SITE PLAN_SLOPE ANALYSIS

1" = 30'-0"

1

06/03/17



2277 Fair Oaks Boulevard, Studio 220
 Sacramento, California 95825
 916 993-4800 | www.hrgarchitects.com

SITE SLOPE ANALYSIS

7701 REDWOOD BLVD - NOVATO HOTEL CONCEPT STUDY

A6



STANDING SEAM METAL ROOFING



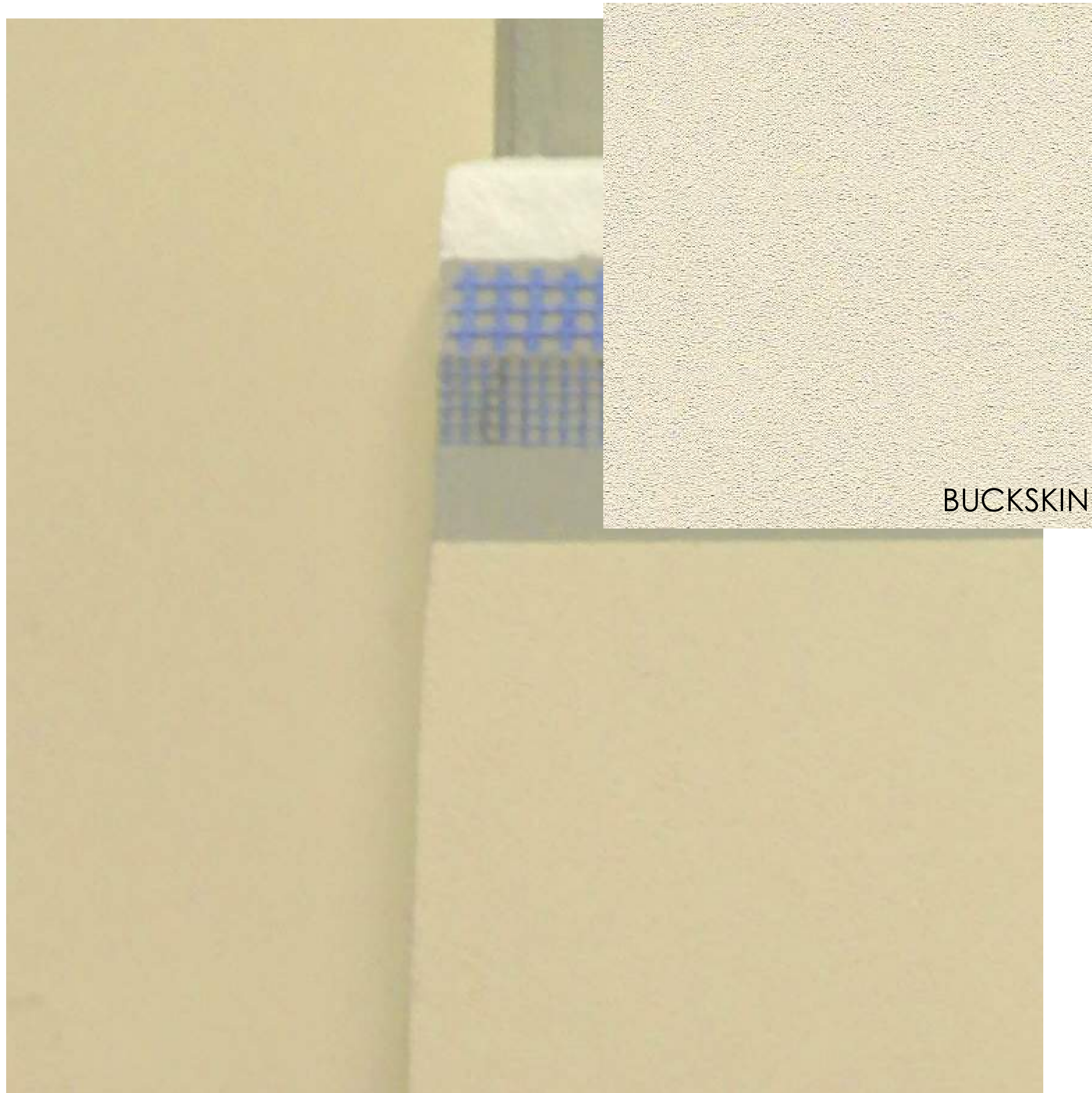
**STOREFRONT MULLION -
DARK BRONZE ANODIZED**



VISION GLAZING - CLEAR

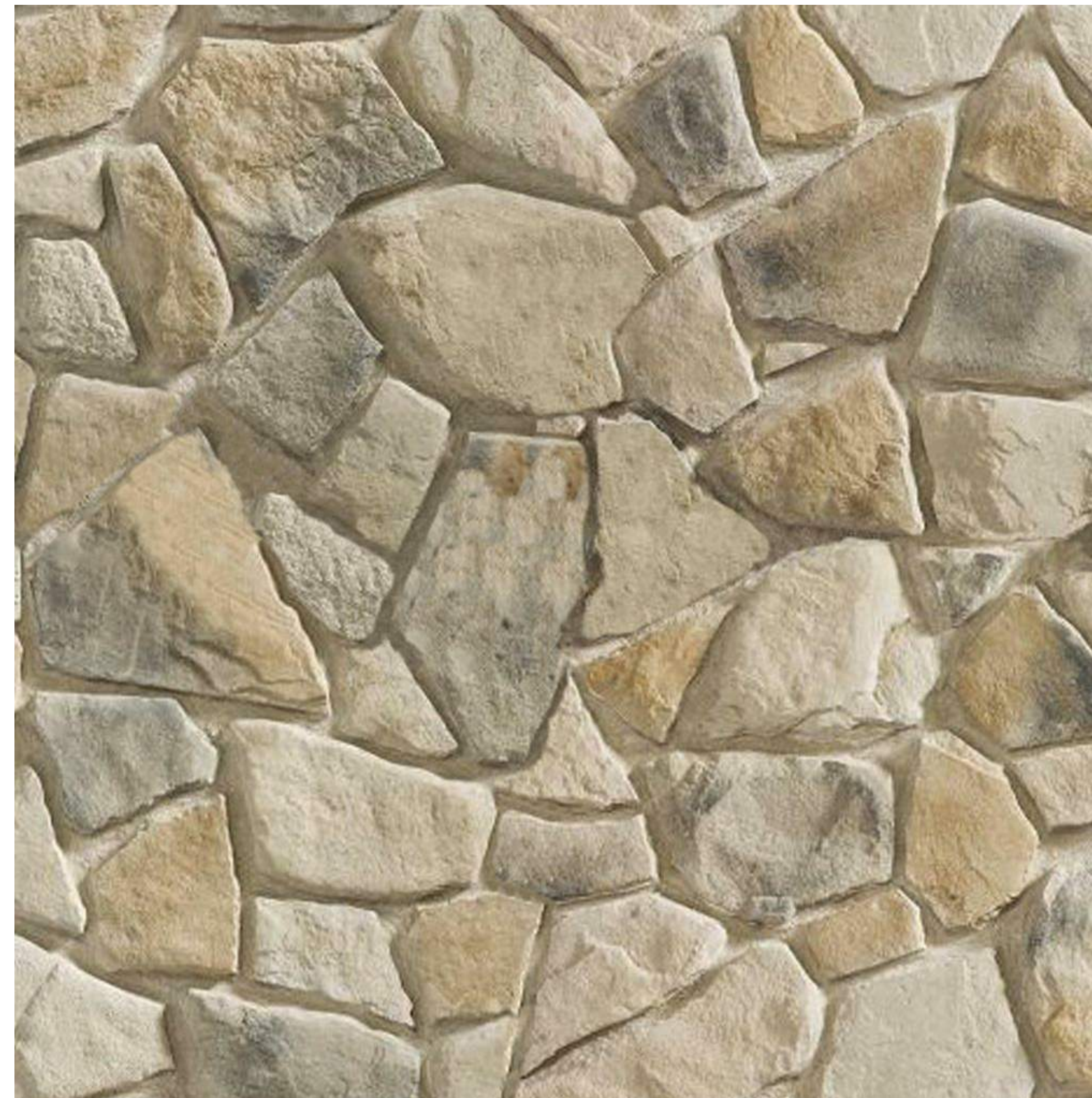


EXTERIOR PAINT DUNN EDWARDS
WEATHERED BROWN



BUCKSKIN

EXTERIOR INSULATION FINISHING SYSTEM (EIFS)



CULTURED CAST STONE



BOARD & BATTEN WOOD SIDING

06/03/17

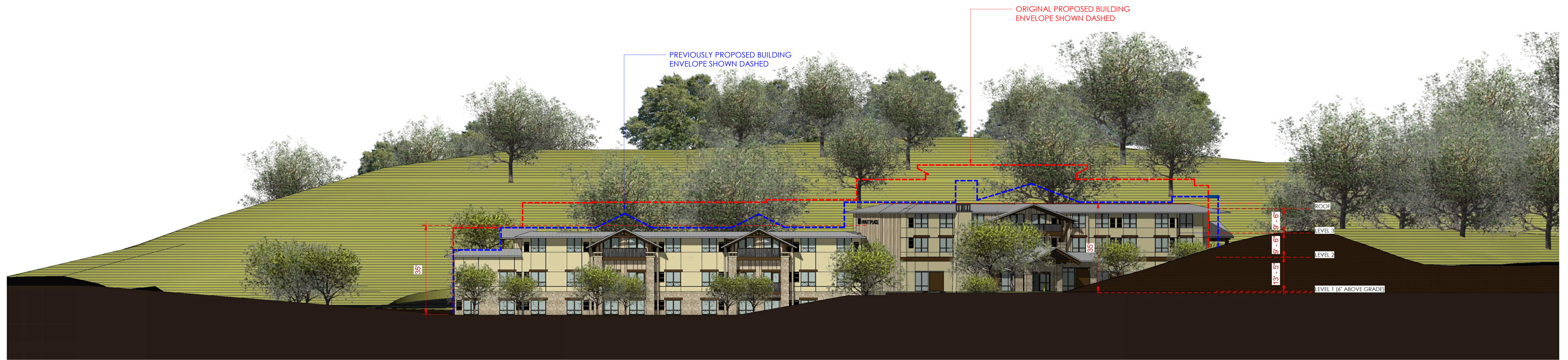


2277 Fair Oaks Boulevard, Studio 220
Sacramento, California 95825
916.993.4800 | www.hrgarchitects.com

MATERIAL BOARD

7701 REDWOOD BLVD - NOVATO HOTEL CONCEPT STUDY

A9



**EAST ELEVATION -
COMPARISON**



PERSPECTIVE - COMPARISON

06/16/17



2277 Fair Oaks Boulevard, Studio 220
Sacramento, California 95825
916 993-4800 | www.hrgarchitects.com

GRAPHIC DESCRIPTION OF CHANGES
7701 REDWOOD BLVD - NOVATO HOTEL CONCEPT STUDY

A10