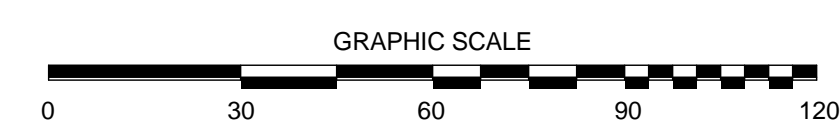




SITE PLAN

1" = 30'-0"

1



AREA SUMMARY

	HOTEL	PATIO	NOTE
BASEMENT		-	11,843 SF (NOT INCLUDED FOR MAX BUILD-OUT CALCS)
1 FL	17,240 SF	0 SF	
2 FL	16,140 SF	-	
3 FL	15,130 SF	-	
4 FL	6,840 SF	-	
TOTAL	55,350 SF	0 SF	
MAX ALLOWED	56,430 SF		

MAXIMUM BUILD-OUT UNDER BPO W/HILLSIDE FAR REDUCTION: 117,564 X 0.4 = 47,025 SF

MAXIMUM BUILD-OUT WITH 20% BONUS FOR 25% OF PARKING UNDERGROUND: 47,025 X 1.20 = 56,430 SF

PARKING REQUIREMENT

TOTAL ROOM COUNTS: 87 ROOMS
 1 CAR/ROOM: 87 CARS REQUIRED.

25% OF UNDERGROUND PARKING: 87 X 25% = 22 CARS (30 CARS PROVIDED)

TOTAL: 87 CARS PROVIDED
 BASEMENT: 30 CARS
 SITE: 57 CARS

TOTAL ROOM COUNTS

HOTEL BRAND HAS NOT BEEN CHOSEN YET. THE INFORMATION WILL BE PROVIDED AS PROJECT DEVELOPS. IT IS EXPECTED APPROXIMATELY 87 - 95 ROOMS

SUMMARY

5/25/2016



2277 Fair Oaks Boulevard, Studio 220
 Sacramento, California 95825
 916 993-4800 | www.hrgarchitects.com

SITE PLAN

7701 REDWOOD BLVD - NOVATO HOTEL CONCEPT STUDY

A1



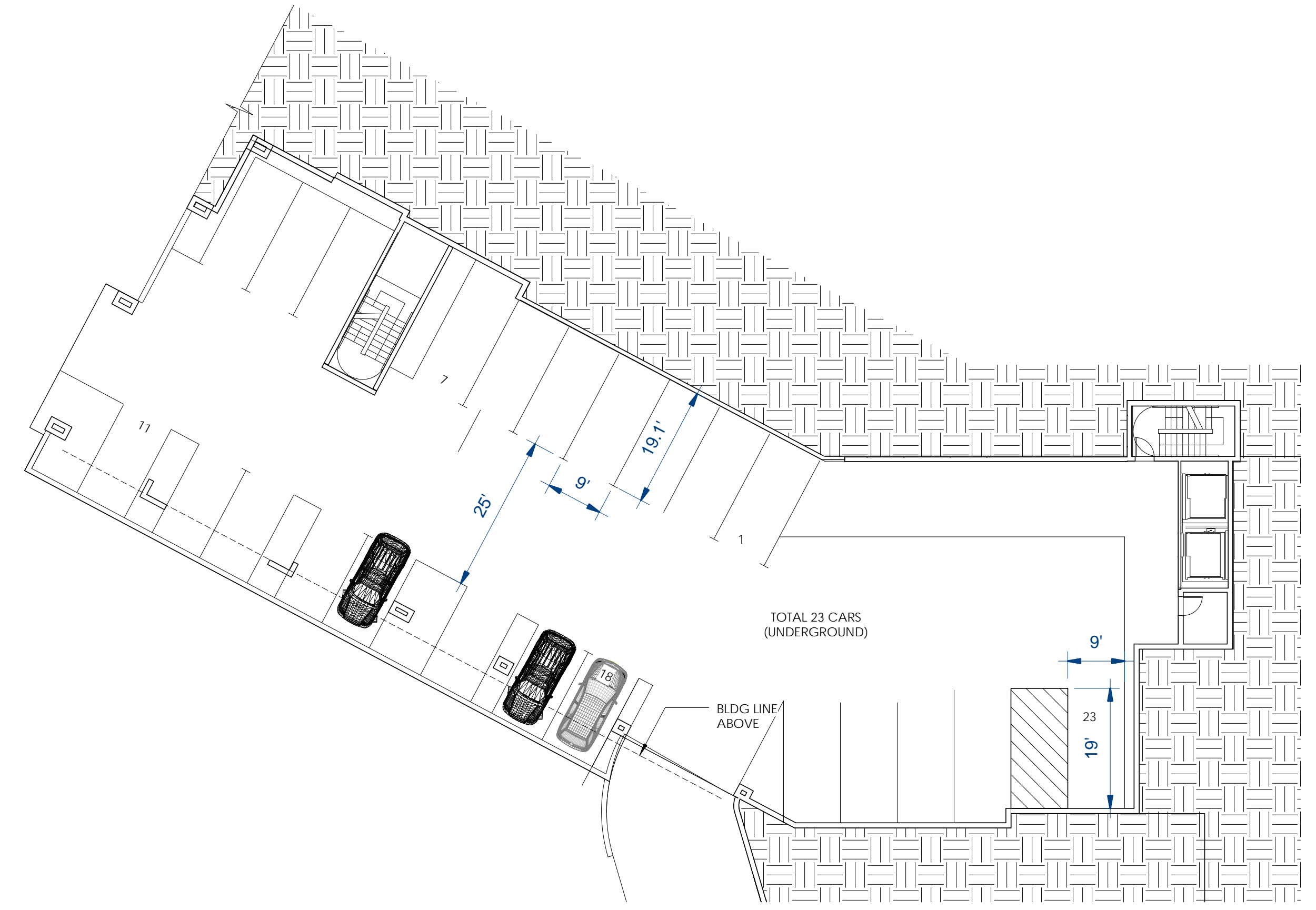
GRAPHIC SCALE 0 16 32 48 64
 1/16" = 1'-0" **1**
 GROUND FLOOR PLAN



GRAPHIC SCALE 0 16 32 48 64
 1/16" = 1'-0" **2**
 LEVEL 2



GRAPHIC SCALE 0 16 32 48 64
 1/16" = 1'-0" **3**
 LEVEL 3-4



GRAPHIC SCALE 0 16 32 48 64
 1/16" = 1'-0" **4**
 BASEMENT PLAN

SUITE COUNT - 1st FLOOR		
Suite Type	Count	KITCHENETTE
K SUITE	3	YES
KAR SUITE	1	YES
KDL SUITE	6	YES
KS SUITE	4	YES
KS-2 SUITE	1	YES
QQS SUITE	1	YES
	16	

SUITE COUNT - 2nd FLOOR		
Suite Type	Count	KITCHENETTE
K SUITE	6	YES
KAR SUITE	1	YES
KD SUITE	1	-
KDL SUITE	10	
KS SUITE	10	
KS-2 SUITE	1	YES
QQS SUITE	1	YES
	30	

SUITE COUNT - 3rd FLOOR		
Suite Type	Count	KITCHENETTE
K SUITE	5	YES
KAR SUITE	1	YES
KD SUITE	1	-
KDL SUITE	10	
KS SUITE	10	
KS-2 SUITE	2	YES
	29	

SUITE COUNT - 4th FLOOR		
Suite Type	Count	KITCHENETTE
K SUITE	3	YES
KD SUITE	1	-
KDL SUITE	4	-
KS SUITE	4	
	12	

TOTAL ROOM COUNTS: 87 ROOM

5/25/2016



2277 Fair Oaks Boulevard, Studio 220
 Sacramento, California 95825
 916 993-4800 | www.hrgarchitects.com

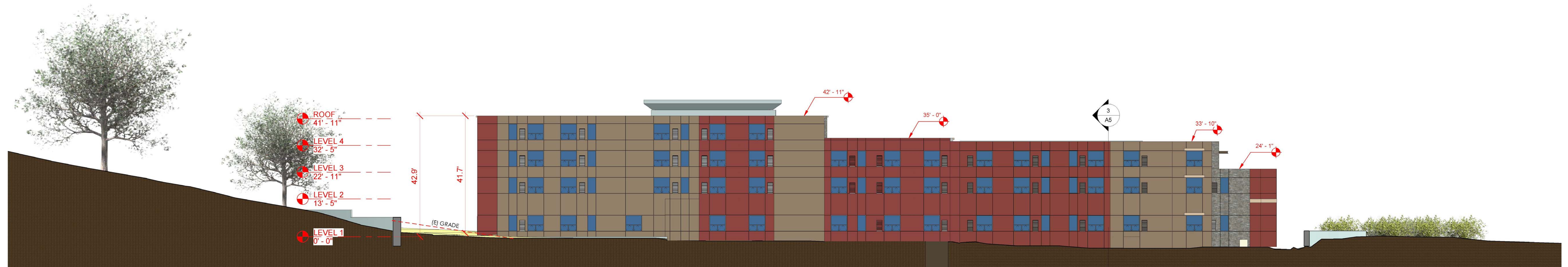
FLOOR PLANS

7701 REDWOOD BLVD - NOVATO HOTEL CONCEPT STUDY

A2



EAST ELEVATION



WEST ELEVATION

5/25/2016

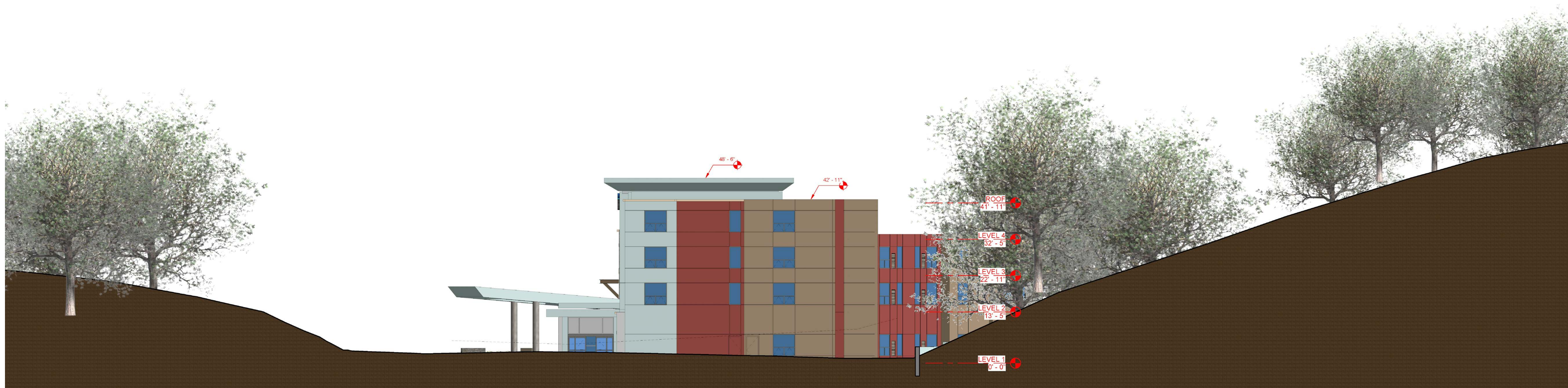


2277 Fair Oaks Boulevard, Studio 220
 Sacramento, California 95825
 916 993-4800 | www.hrgarchitects.com

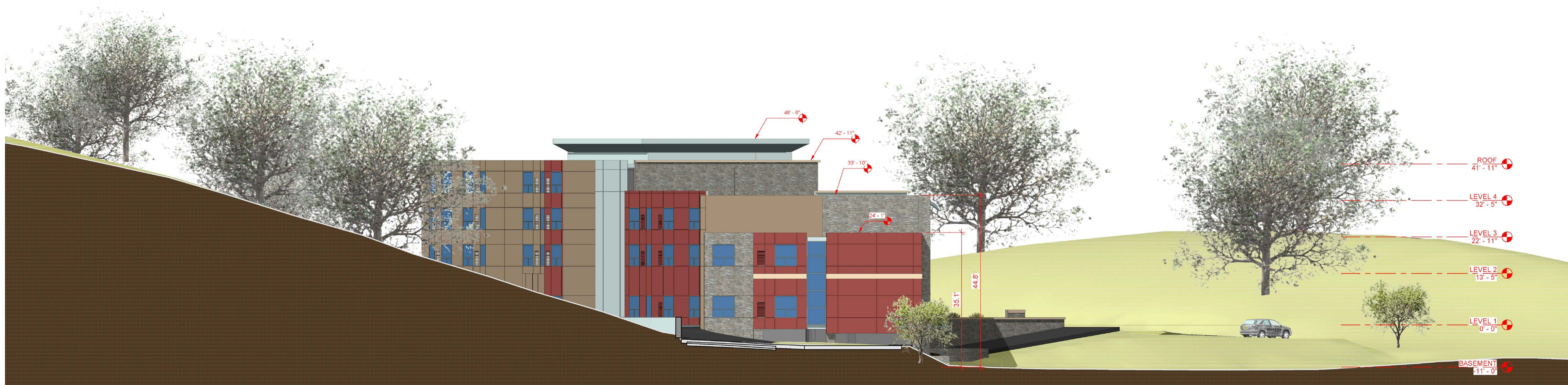
ELEVATIONS

7701 REDWOOD BLVD - NOVATO HOTEL CONCEPT STUDY

A3



NORTH ELEVATION



SOUTH ELEVATION

5/25/2016

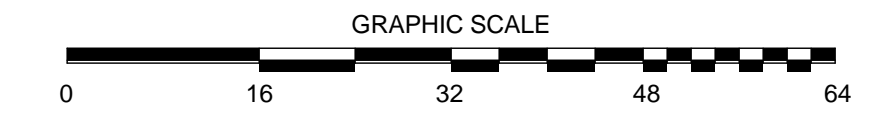
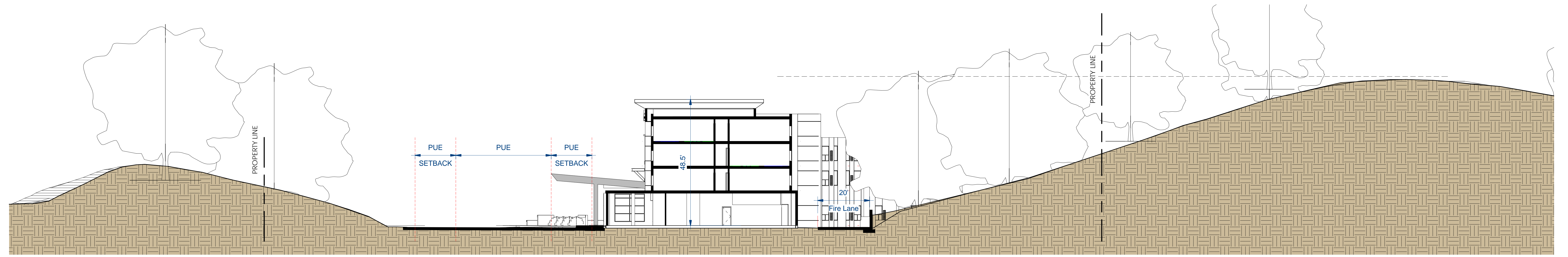


2277 Fair Oaks Boulevard, Studio 220
 Sacramento, California 95825
 916 993-4800 | www.hrgarchitects.com

ELEVATIONS

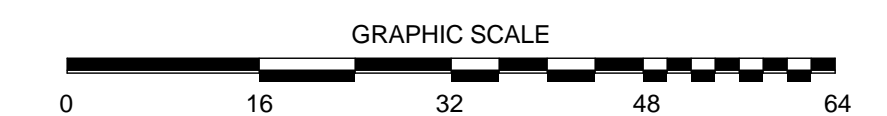
7701 REDWOOD BLVD - NOVATO HOTEL CONCEPT STUDY

A4



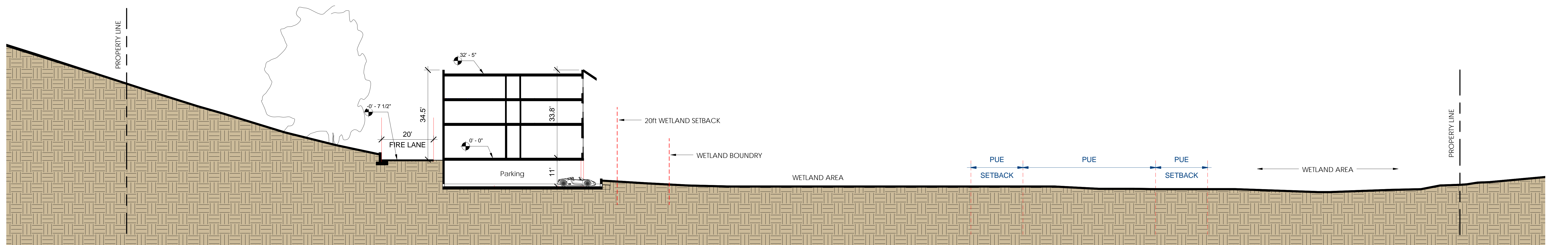
BUILDING SECTION-1

1



SITE SECTION - THRU ENTRY PLAZA

2



SITE SECTION - THRU WETLAND

3

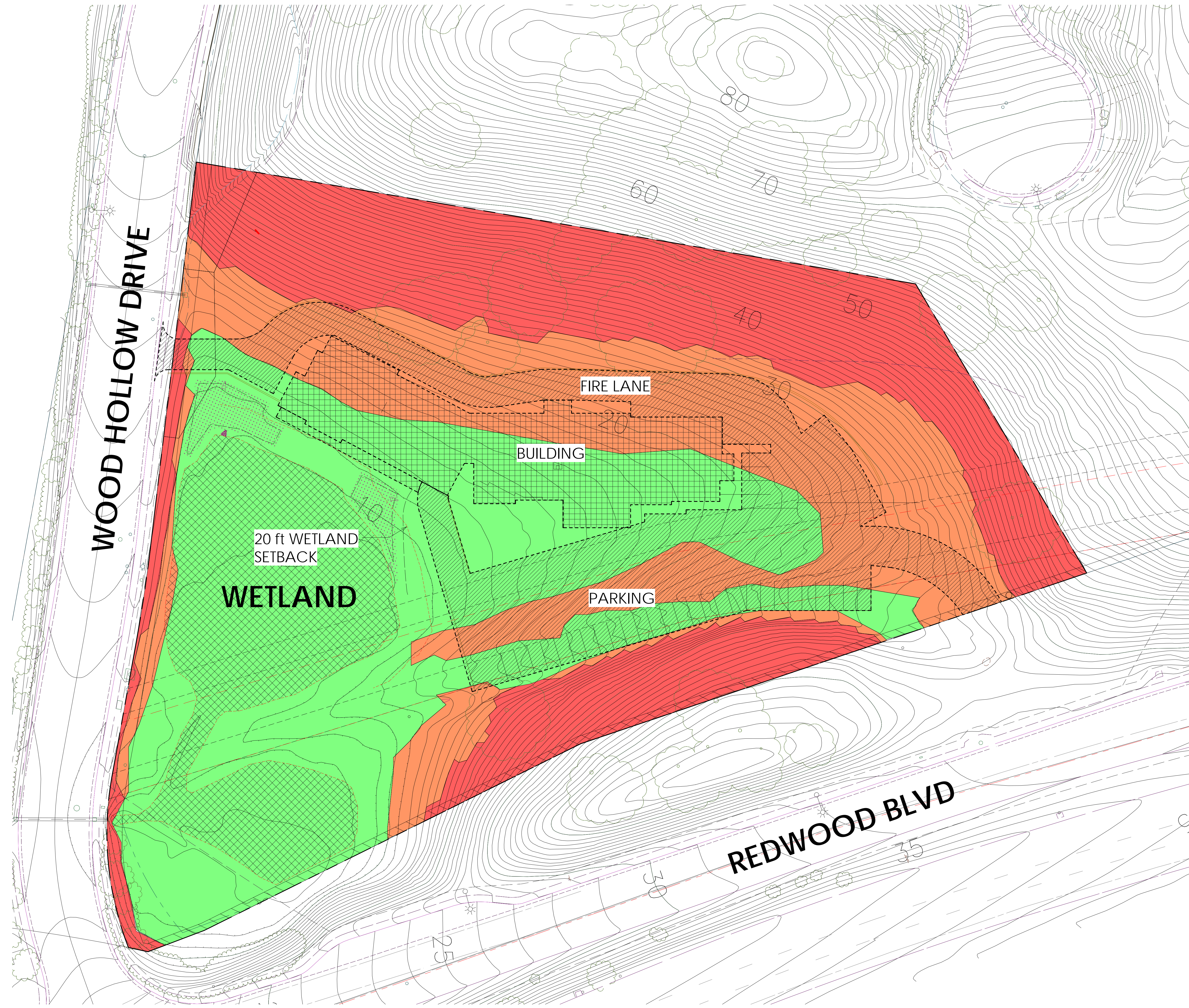
5/25/2016






2277 Fair Oaks Boulevard, Studio 220
 Sacramento, California 95825
 916 993-4800 | www.hrgarchitects.com

SITE SECTIONS
 7701 REDWOOD BLVD - NOVATO HOTEL CONCEPT STUDY

A5



SLOPE ANALYSIS LEGEND - AREA C

COLOR	SLOPE	AREA	PERCENT
	0 - 10%	1.94 AC.	43.3%
	10 - 25%	1.33 AC.	29.7%
	> 25%	1.21 AC.	27.0%
	TOTAL	4.48 AC.	100%

SITE PLAN_SLOPE ANALYSIS

1' = 30' 0" 1

5/25/2016



2277 Fair Oaks Boulevard, Studio 220
 Sacramento, California 95825
 916 993-4800 | www.hrgarchitects.com

SITE SLOPE ANALYSIS

7701 REDWOOD BLVD - NOVATO HOTEL CONCEPT STUDY

A6



5/25/2016



2277 Fair Oaks Boulevard, Studio 220
Sacramento, California 95825
916 993-4800 | www.hrgarchitects.com

PERSPECTIVE

7701 REDWOOD BLVD - NOVATO HOTEL CONCEPT STUDY

A7